



Healthcare Solutions

Florida HIE Informational Session

June 10, 2011



Trusted at the intersection of
life and data™ 

Florida HIE Informational Session Agenda



Trusted at the intersection of
life and data™ 



Better Health Care for All Floridians

Welcome

Who is Harris?

**Why Are We Here—Florida
Awareness and Adoption**

Overview of the Florida HIE

On-boarding to the Florida HIE

Florida HIE Availability

Information and Contacts

Q&A

The quality of health care in Florida is important to us

Harris Healthcare Solutions and Florida HIE



Trusted at the intersection of
life and data™ 



- Harris Corporation is an international communications and information technology company
- Harris Healthcare Solutions has been awarded a four-year, \$19 million contract by Florida's Agency for Health Care Administration (AHCA)
- Harris is to implement a statewide Health Information Exchange (HIE) infrastructure that will improve the delivery and coordination of health care



Better Health Care for All Floridians

Harris Healthcare Solutions brings Health IT to the medical community

Harris Healthcare Solutions and Florida HIE



Trusted at the intersection of life and data™



The Harris Team has extensive experience in designing, enhancing, and fielding enterprise level systems for commercial and government customers, including the Department of Veterans Affairs, ONC, and Health First. The systems and solutions include VistA Imaging, MyHealthVet (MHV), Enrollment System Redesign (ESR), CPAC and Registries, and CONNECT.



Better Health Care for All Floridians

Harris Healthcare Solutions brings Health IT to the medical community

David Riley—*ONC/NwHIN*

CONNECT Lead (contractor), Federal Health Architecture, Office of the National Coordinator

- 34 years experience in healthcare
- Recognized leader in managing large-scale, multi-organizational HIT projects

Lisa Rawlins—*Policy*

Executive Director for the South Florida Regional Extension Center

- 20-year health policy veteran of the Florida Executive Branch, Florida House of Representatives, and the private sector

Scott Afzal—*State HIE*

Program Director, CRISP—Maryland's State HIE

- Instrumental in managing relationships with state and federal government stakeholders and partners to fuel the adoption of CRISP



Bart Harmon—*Clinical Informatics*

Harris's Chief Medical Officer (CMO)

- Served as Chief Medical Information Management for MHS
- National leader in military health care and health information systems
- Served on a work group to standardize HIT terms for the ONC, on the AHIC Electronic Health Records Work Group and was on the Board of the U.S. Health Information Technology Standards Panel
- Served as the DoD lead for the international health standards organization, Health Level Seven (HL7)



Tony Galluscio—*Interoperability*

Director of Programs for Harris Healthcare Solutions

- Served as a liaison between the CONNECT program and the NwHIN Specification Factory to align Federal standards with the CONNECT reference implementation
- Instrumental in successful production launch of the SSA medical disability determination implementation of CONNECT

The Harris FHIE Advisory Board provides counsel to the execution team and ACHA, at no cost to the program

Florida HIE Overview



Trusted at the intersection of
life and data™ 



- **Harris Healthcare Solutions and the Florida HIE connect provider networks which include:**
 - Physicians
 - Hospitals
 - Regional Health Information Exchanges
 - State Government Agencies
- **Health entities are provided a timely, secure, and authorized exchange of patient health information for treatment purposes**
- **The solution provided is a network of networks that is open-source, standards-based, and leverages existing provider networks to connect Florida's healthcare providers**



Better Health Care for All Floridians

Exchanging health information from the Florida Panhandle to the Keys

Why We Are Here—*Florida HIE Adoption and Outreach*



Trusted at the intersection of
life and data™ 



Better Health Care for All Floridians



Stakeholders

- Patients
- Active Physicians
- RECs—Regional Extension Centers
- Hospitals, Clinics, Physicians' Groups (Public and Private)
- RHIOs, Private HIEs, IDNs, IPAs
- Long-Term Care and Mental Health Facilities
- DOH—Department of Health (State Systems)
- State Immunization Records (Florida SHOTS)
- FQHC—Federally Qualified Health Centers
- Labs—LabCorp, Quest, and State Labs
- Surescripts—E-Prescription Network

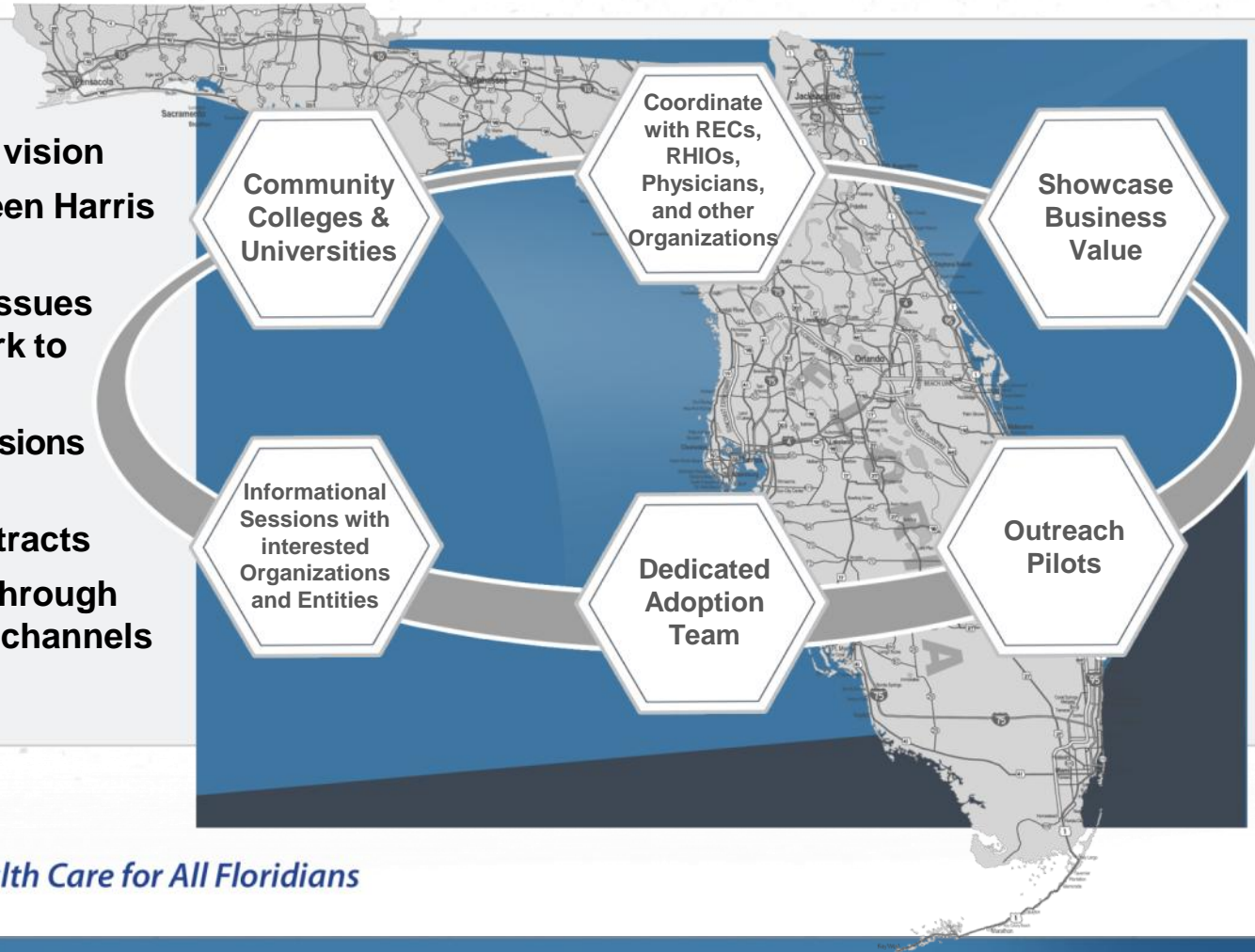
Florida HIE Outreach and Adoption



Trusted at the intersection of
life and data™

Objectives

- **Communicate Florida HIE vision**
- **Serve as the liaison between Harris and the stakeholders**
- **Understand barriers and issues through Adoption and work to resolve**
- **Facilitate informational sessions in the local communities**
- **Manage Outreach subcontracts**
- **Disseminate information through identified communication channels**



Better Health Care for All Floridians

Network and Organizations Terminology



Trusted at the intersection of
life and data™ 



Better Health Care for All Floridians

Provider Networks

- RHIOs
- IDNs
- HIEs
- IPAs

Physician and Other Healthcare Organizations

- Physician Groups
- Individual Practices
- Clinics
- Hospitals
- Public Health

Consumers

- Patients

Understanding some of the various types of networks and organizations

Direct Secure Messaging (DSM)/ Provider Directory (PD)

- Establishes provider directory and secure communication network
- Concept of “pushing” data from one party to another

Patient Lookup Service

- Electronic retrieval of records from multiple data sources at point of care
- Concept of “pulling” or retrieving a patient’s data after patient consent
- Patient matching based on patient demographics
- Document generation capability

Public Health Reporting

- Document submission



Federated

A HIE architecture where data and services reside locally rather than being centralized. For the Florida HIE, Patient Data, and the Master Patient Index (MPI), are kept by the Provider Networks and only accessed upon request. Express aggregates the data prior to returning it to the requestor.

Express

A compilation of software products integrated together that allows an organization to connect to the Florida HIE directly, or to form its own HIE and connect to the Florida HIE. Express would be most beneficial to an organization that does not have an MPI.

Express Lite

A compilation of software products that allows an organization or entity that already has an MPI to connect to the Florida HIE directly.

CONNECT

A standards-based gateway solution that allows the transfer of data over the web. It can pull or push data, and can be used to respond to queries for patient data without a person having to be involved. CONNECT is one of the components that is included in the Express/Express Lite package.

Florida HIE Architecture



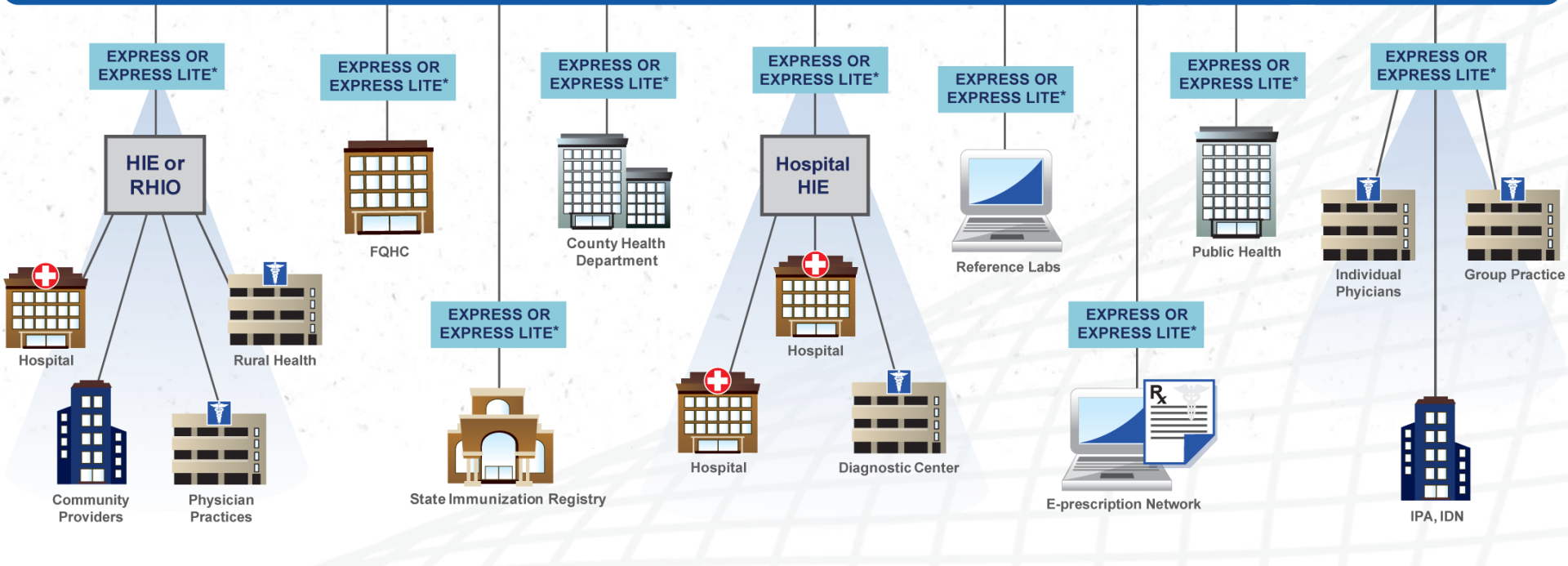
Trusted at the intersection of life and data™

Nationwide Health Information Network (NwHIN)

INFRASTRUCTURE

INTERNET

STATE CONNECTIVITY is via the INTERNET



Multiple Options for Health Information Exchange

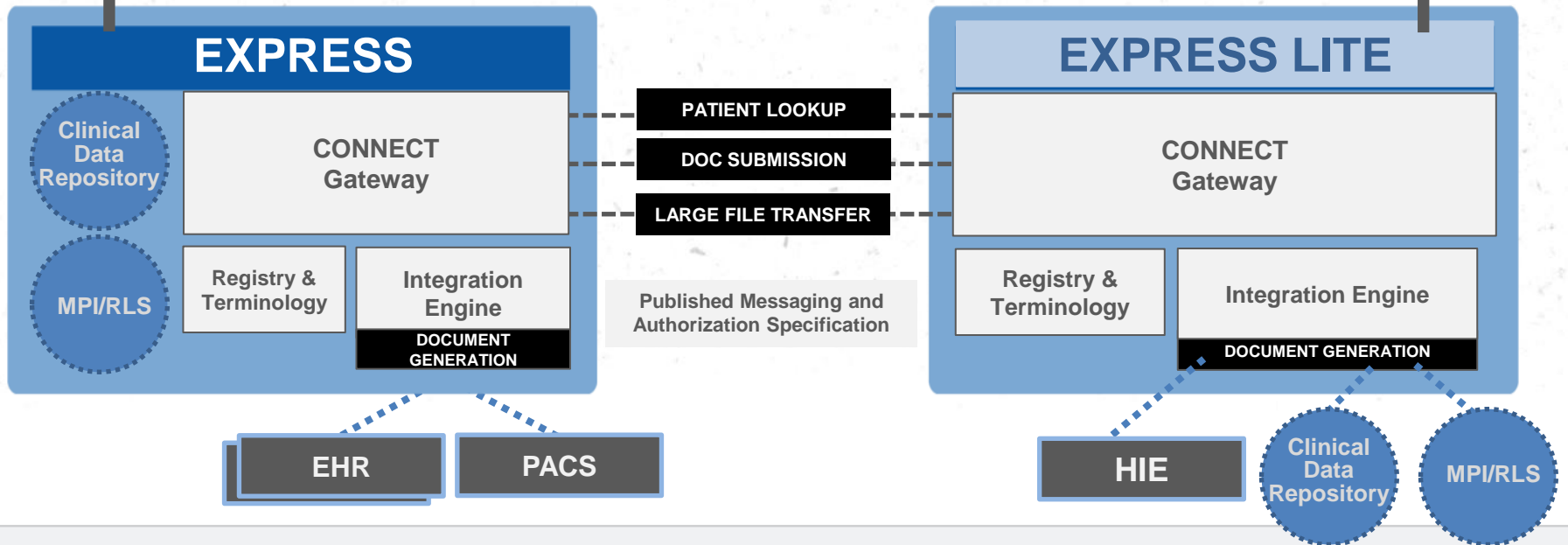
* Use of EXPRESS or EXPRESS LITE will be based upon review of Readiness Assessment

Florida HIE Services Overview



Trusted at the intersection of life and data™

INFRASTRUCTURE

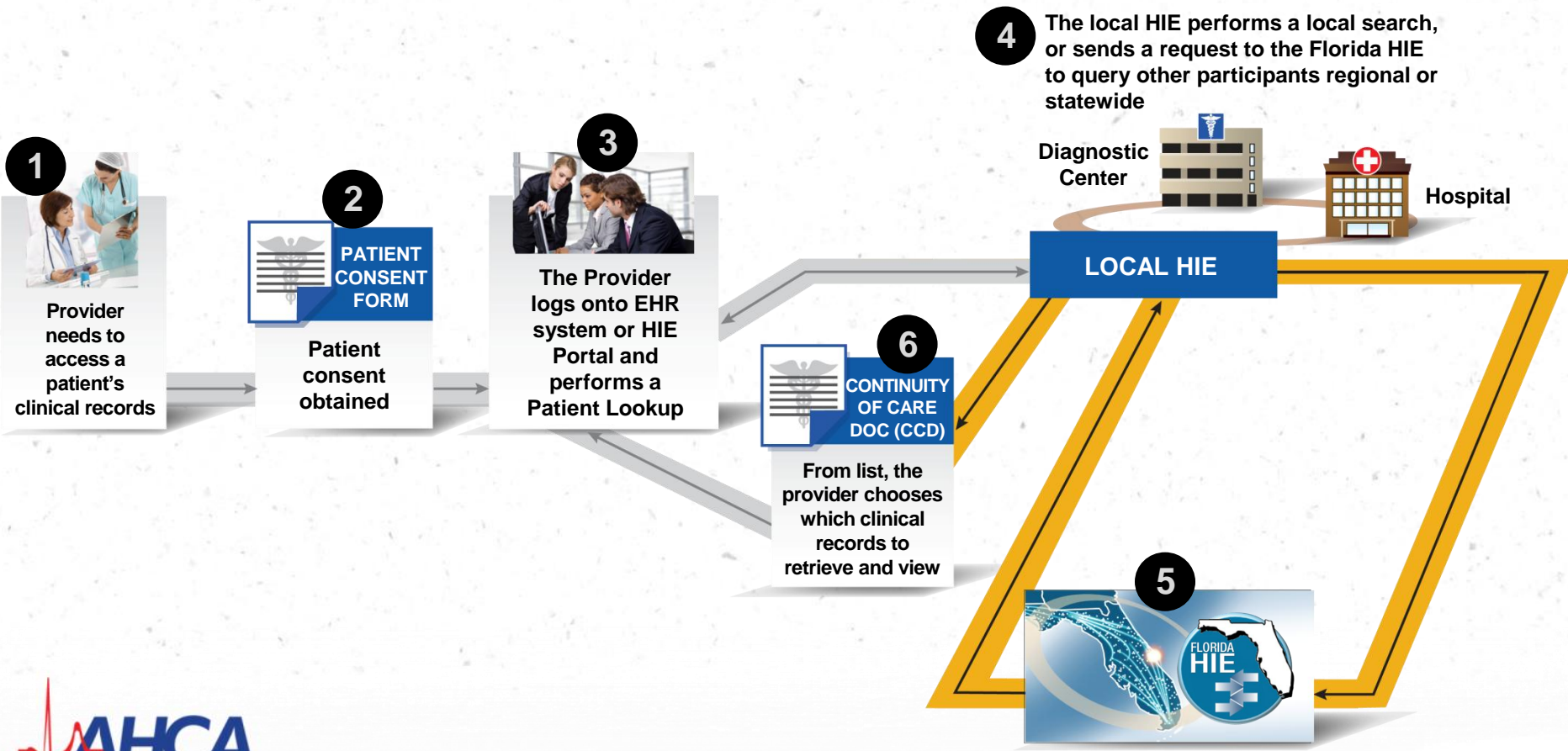


Express or Express Lite Platform Provides Flexibility for Participants

Patient Lookup Service



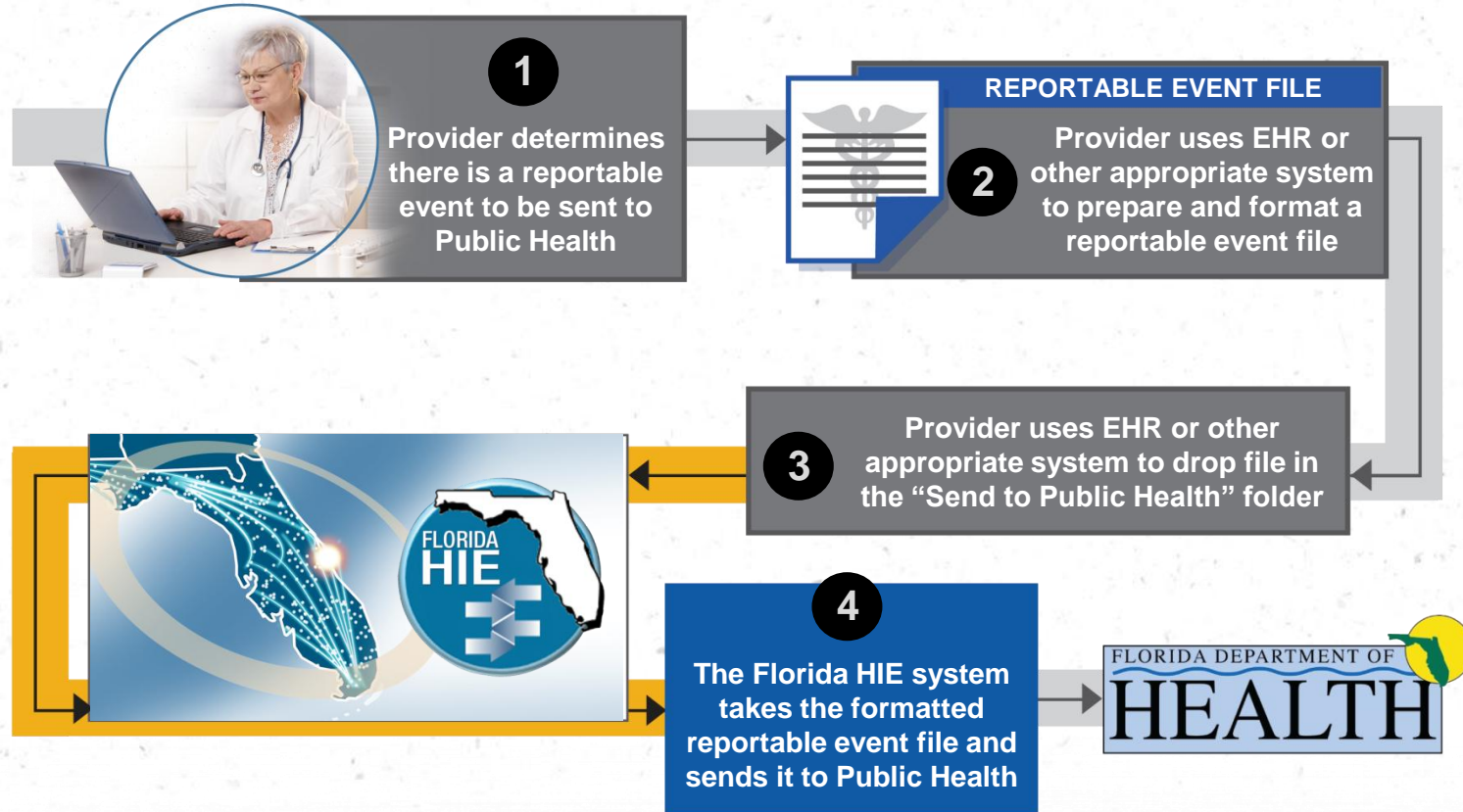
Trusted at the intersection of life and data™



Better Health Care for All Floridians

The Florida HIE is an extension of existing local HIE capabilities

Public Health Reporting



The Florida HIE provides a method to send reportable events to Public Health

Direct Secure Messaging (DSM) Terminology



Trusted at the intersection of
life and data™ 



Direct

An Office of the National Coordinator (ONC) for Health IT project that provides specifications for a simple, secure scalable, standards-based transportation mechanism that enables participants to send (push) encrypted health information directly to known, trusted recipients over the Internet.

P2P Direct

The Harris application used by the Florida HIE Direct Secure Messaging Service that implements the ONC Direct specifications.

Provider Directory

A directory of healthcare organizations and providers that are subscribed to the Florida HIE DSM service.

Florida HIE: Direct Secure Messaging (DSM) Architecture Overview

In Release 1 Florida HIE offers Direct Secure Messaging available in the infrastructure hosted at the Data Center:
Access Direct Secure Messaging via the Web Email Client



Secure Internet Web-Client Access

Secure Internet Web-Client Access

Secure Internet Web Client Access

1

1

2

Hospital HIE



INDEPENDENT PHYSICIANS

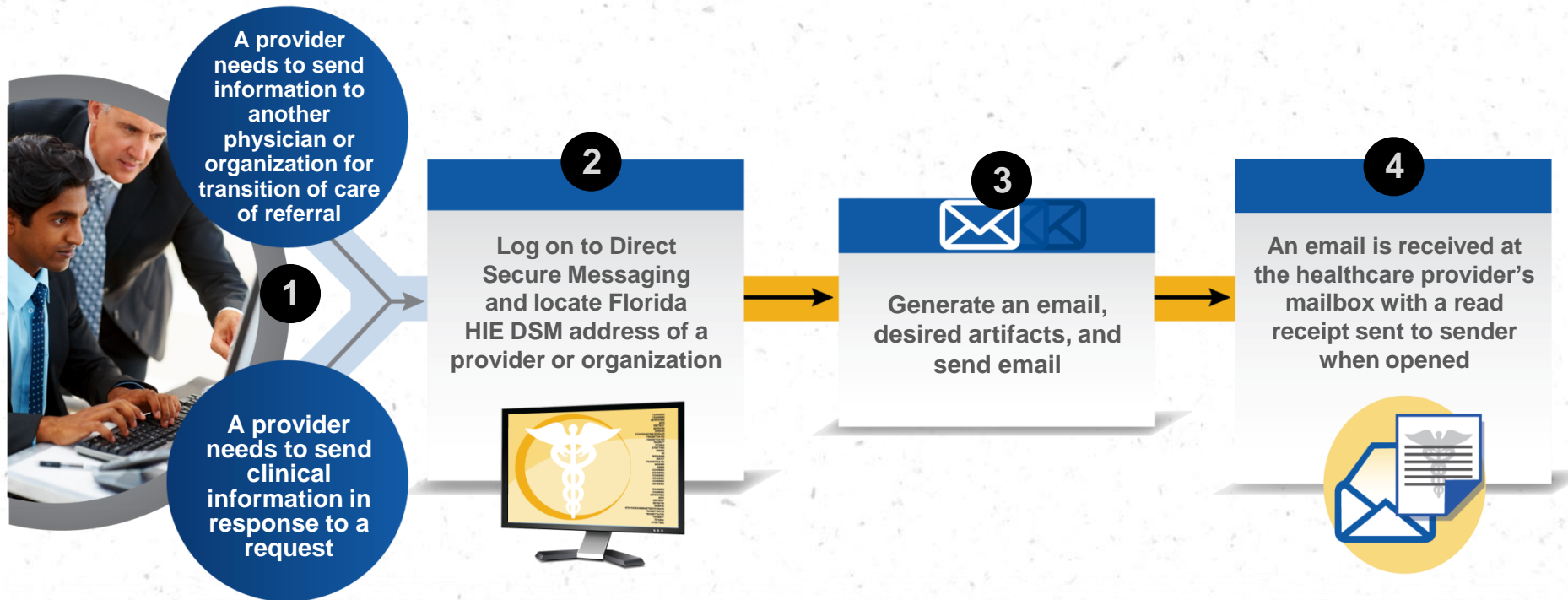


PHYSICIANS GROUP



PHYSICIANS

Direct Secure Messaging



Providers can exchange clinical records statewide using secure protocols

On-boarding to the Florida HIE

HARRIS[®]

Trusted at the intersection of
life and data™ 



Better Health Care for All Floridians

Physicians' and Other Healthcare Organizations' Participation



Trusted at the intersection of
life and data™

Options Available

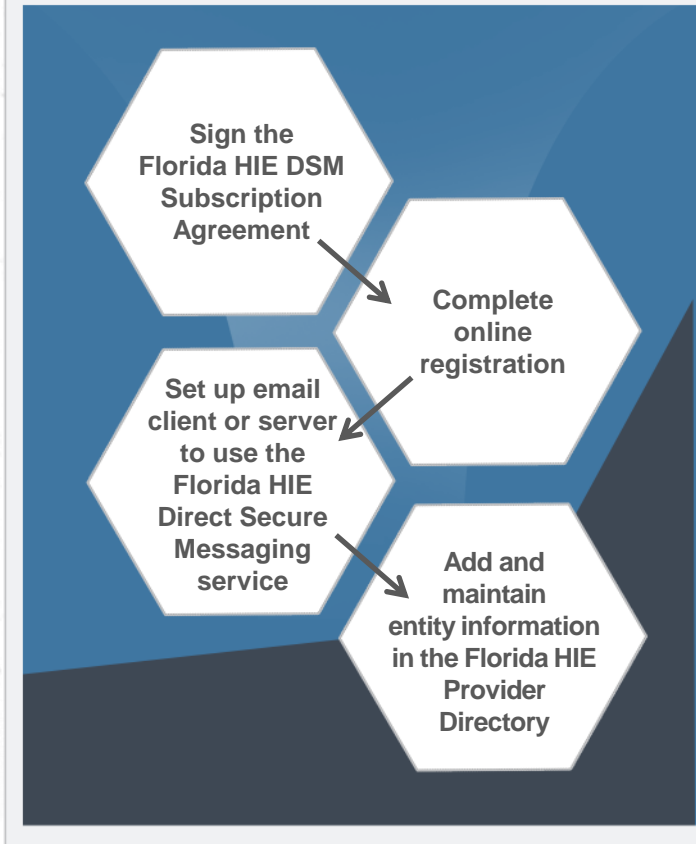
▪ Patient Lookup Services

- Join a provider network that will be on-boarding to the Florida HIE

▪ Direct Secure Messaging (secure email) and Provider Directory services

- **Option 1:** Join a provider network that will be providing Florida HIE Direct Secure Messaging services
- **Option 2:** On-board directly
 - Internet access
 - Support and maintain your own computer systems
 - Specified security and privacy policies and procedures in place

Subscription Process Steps



Better Health Care for All Floridians

We work with you to find the right option

Provider Network On-Boarding Process



Trusted at the intersection of
life and data™

Harris will assist each organization with the following:

- Complete a Readiness Assessment
- Determine if Express or Express Lite is needed

Make recommendations to AHCA on priority of implementation



Better Health Care for All Floridians

Minimum Requirements for a Provider Network to Subscribe to Patient Lookup Service



Trusted at the intersection of
life and data™ 



Provider Networks

- **Must be a valid legal entity**
- **Must have an operational HIE of clinical data between healthcare providers**
- **Must have demonstrated breadth and depth of organization capacity**
 - Technical support staff and resources
 - Capability to match and respond to incoming requests for clinical data on a patient
 - This capability, along with a results repository, can be provided by Harris
 - Minimum system requirements:
 - VMware Player
 - 4 CPU cores
 - 8 GB RAM
 - 100 GB Storage



Better Health Care for All Floridians

More details, technical specs, and policies will be available on the Florida HIE website

Minimum Requirements for a Provider Network to Subscribe to Patient Lookup Service



Trusted at the intersection of
life and data™ 



Provider Networks

- **Must have certain security and privacy policies and procedures in place**
 - Appropriate administrative, physical, and technical safeguards
 - Sign and comply with the Florida HIE Participation Agreement
 - Valid and enforceable agreements with each of your participating users and technology partners
 - Ability to perform local auditing and monitoring
 - Basic privacy structure
 - Requesters must have written patient authorization prior to requesting the patient's health information, except in the case of a medical emergency



Better Health Care for All Floridians

More details, technical specs, and policies will be available on the Florida HIE website

Benefits of Connecting to the Florida HIE



Trusted at the intersection of
life and data™ 



- Access to electronic records facilitates patient care, diagnosis, and course of treatment
- Enhances communications between hospitals, laboratories, pharmacies, and referring physicians
- Reduces orders for duplicate procedures, tests, and medications due to lack of information at the time of care
- Provides connectivity to services outside of Florida through connection with the Nationwide Health Information Network (NwHIN)



Better Health Care for All Floridians



Better Patient Care

Benefits of Connecting to the Florida HIE



Trusted at the intersection of
life and data™ 



Supports Meeting Meaningful Use

■ Connect as an individual

- Send patient referral via Direct Secure Messaging to an authorized recipient (through structured or unstructured attachments)

■ Connect through HIE, RHIO, IDN, IPA, or other organizations

- Continuity of Care Documents (CCDs) available via Patient Lookup
- Forward CCDs with referrals or at transition of care
- Transmit required reports to Public Health
- Access to state data sources



Better Health Care for All Floridians



Better Patient Care



Licenses

- **20 full Express Licenses with maintenance at No Cost for 4 years**
 - Includes MPI and Data Repository
- **Unlimited Free Express Lite and maintenance for 4 years**
 - Upgradable for a fee to include MPI and Data Repository
- **Unlimited Free Direct for Direct Secure Messaging (DSM)**

On-Boarding Options

- **Implementation for up to 20 provider networks**
 - Selected based on readiness
 - 2–3 month integration support alongside your IT team
- **Download of specifications available for self implementation**



Outreach Subcontracts

- \$1.9 million is available from the state
- Managed through Harris
- Up to three awards

Criteria

- Available only to early adopters
- Funds to be used to facilitate connection of a disadvantaged, underserved, or rural organization to a network provider
- Funds cannot be used for purposes covered under another state contract vehicle

Process

- Outreach process is currently being defined with AHCA

Florida HIE Availability



Trusted at the intersection of
life and data™ 



Better Health Care for All Floridians

When is the Florida HIE Available?



Florida HIE begins the Direct Secure Messaging (DSM) rollout in the summer of 2011.

Florida HIE begins the Patient Lookup and Public Health Reporting deployments in the fall of 2011.

Florida HIE Information and Contacts



Trusted at the intersection of
life and data™ 

Project Manager

Janet Hofmeister

Deputy Project Manager

Evan Carter

Technical Lead

Chris Phillips

Product Manager

Andre Hebert

Adoption Manager

Jan Lawrence

Adoption Coordinator

Cindy Stanfield

Adoption Coordinator

Melissa Hargiss

Harris Team Members
can be reached at:
floridahie@harris.com

General Information:

For the latest Florida HIE status:

www.Florida-HIE.net

www.fhin.net

For more information, or to get on our
email list for news about upcoming
events:

floridahie@harris.com



Better Health Care for All Floridians



Trusted at the intersection of life and data™ 

Question and Answer Session



Better Health Care for All Floridians